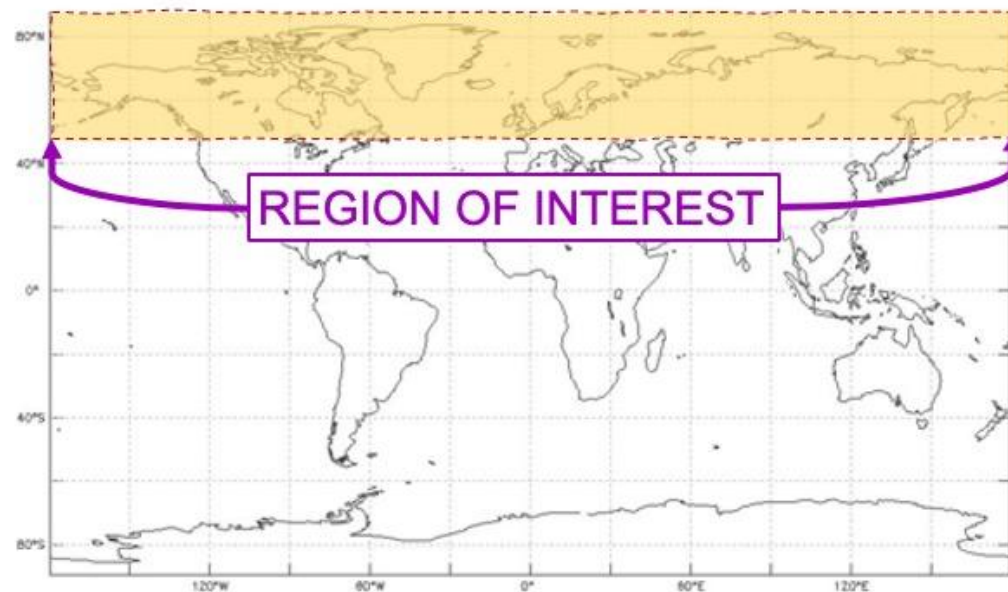




Title: Exploring Cryosphere's Seasonal Thaw

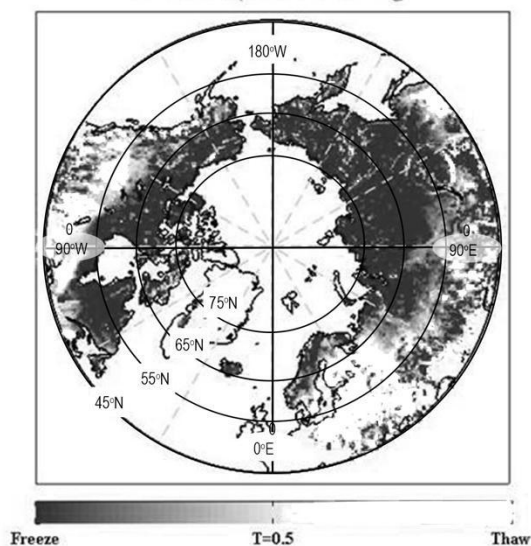


A geographic projection world map shows the region of interest above 45 degrees northern latitude.

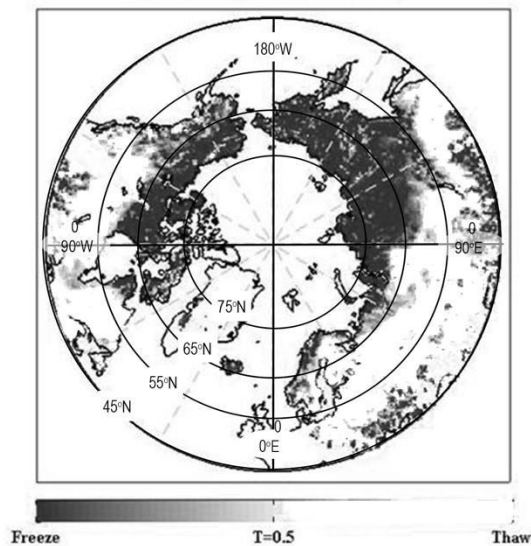
https://mynasadata.larc.nasa.gov/sites/default/files/inline-images/AOI_seasonalthaw_lesson%20world%20map.jpg



April 1, 2015



April 13, 2015



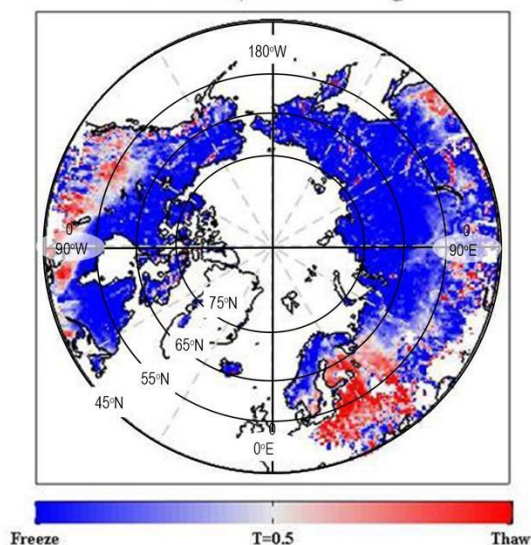
A North Pole orthographic projection world map shows the region of interest above 45 degrees northern latitude.

Credit: Black and White image adapted for educational purposes from [original published data presented by NASA/JPL-CalTech](https://mynasadata.larc.nasa.gov/sites/default/files/inline-images/FreezeThawDATABW_lesson%20polar%20view.jpg)

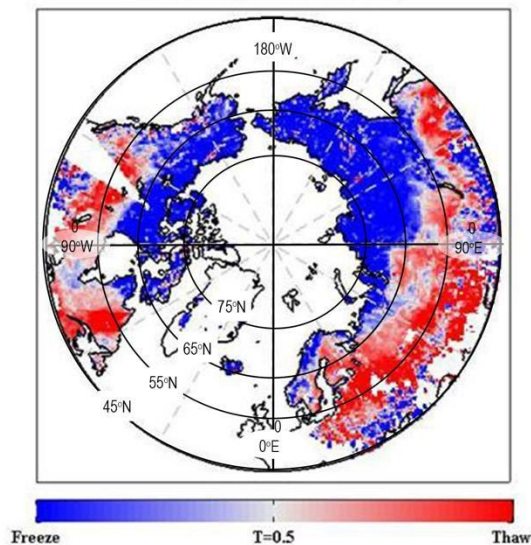
https://mynasadata.larc.nasa.gov/sites/default/files/inline-images/FreezeThawDATABW_lesson%20polar%20view.jpg



April 1, 2015



April 13, 2015



North Pole orthographic projection world map showing freeze-thaw data from April 1, 2015 and April 13, 2015.

Credit: Image adapted for educational purposes. Original data presentation from NASA/JPL-CalTech

<https://www.jpl.nasa.gov/images/pia11399-nasa-smap-images-show-progression-of-spring-thaw-in-northern-hemisphere>

https://mynasadata.larc.nasa.gov/sites/default/files/inline-images/FreezeThawDATA_leson%20color%20polar%20view.jpg