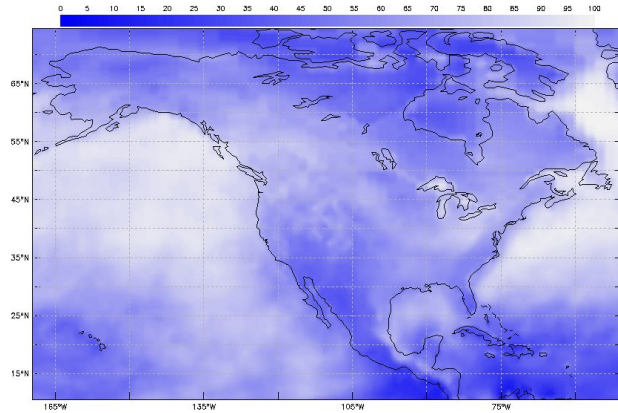


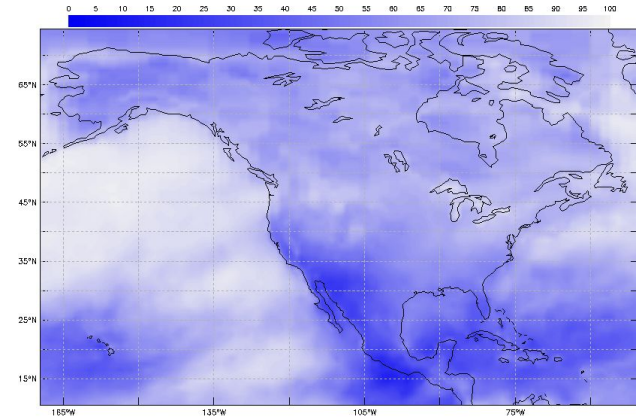


Answer Keys

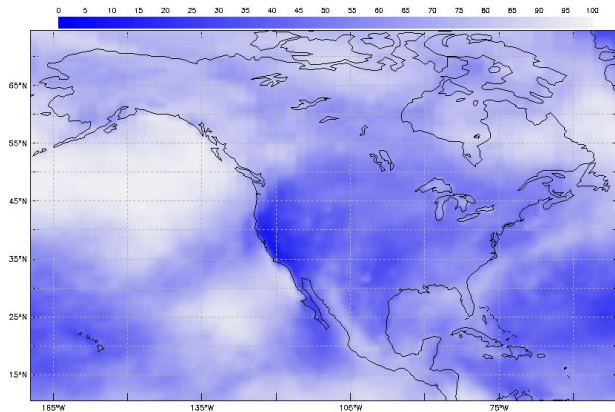
January 2019 - Monthly Total Cloud Coverage (percent coverage)



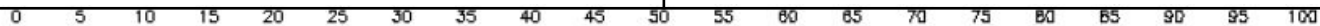
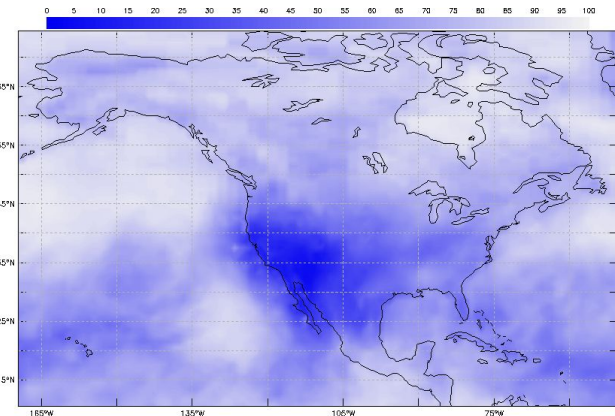
April 2019 - Monthly Total Cloud Coverage (percent coverage)



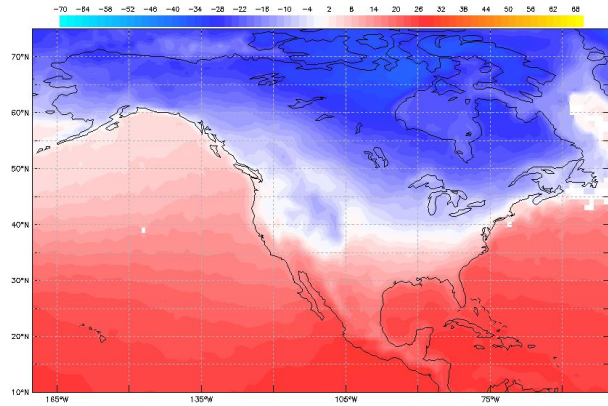
July 2019 - Monthly Total Cloud Coverage (percent coverage)



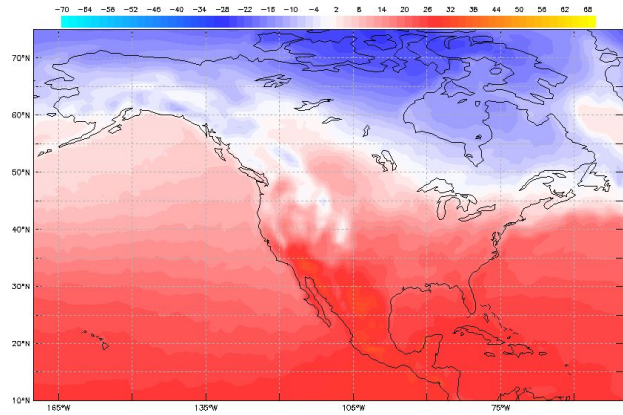
October 2019 - Monthly Total Cloud Coverage (percent coverage)



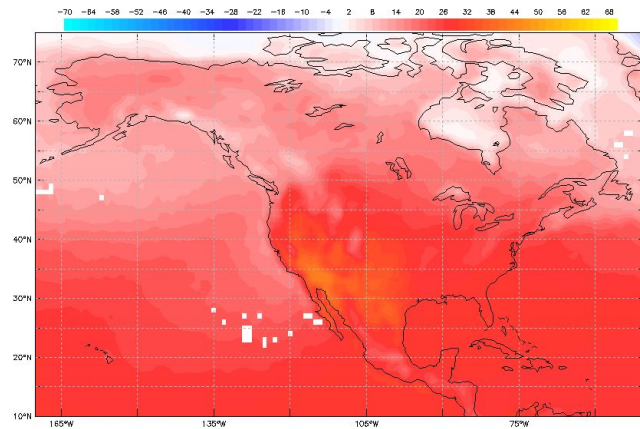
January 2019 - Monthly Surface (Skin) Temperature (degrees Celsius)



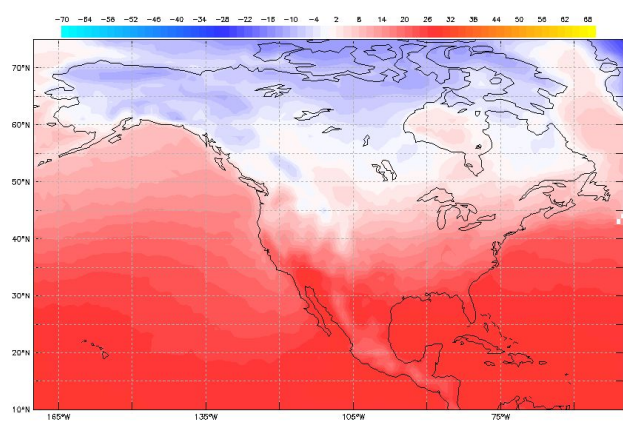
April 2019 - Monthly Surface (Skin) Temperature (degrees Celsius)



July 2019 - Monthly Surface (Skin) Temperature (degrees Celsius)

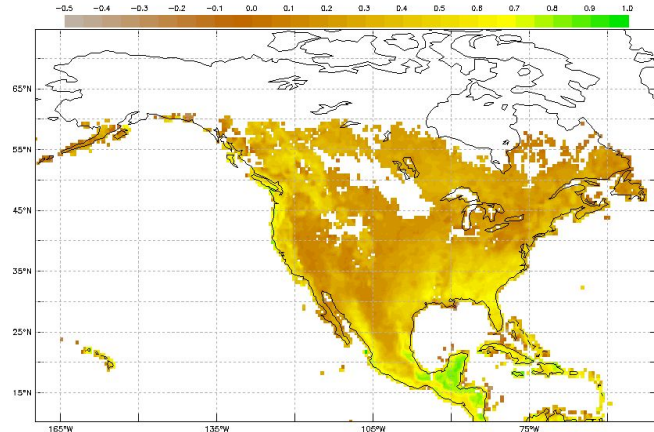


October 2019 - Monthly Surface (Skin) Temperature (degrees Celsius)

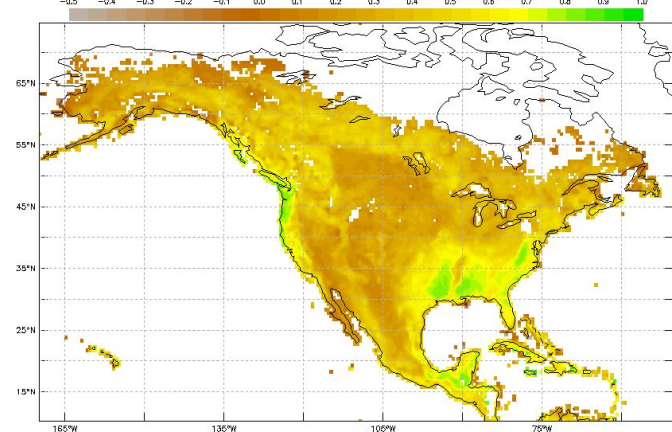


-70 -64 -58 -52 -46 -40 -34 -28 -22 -18 -10 -4 2 8 14 20 26 32 36 44 50 58 62 68

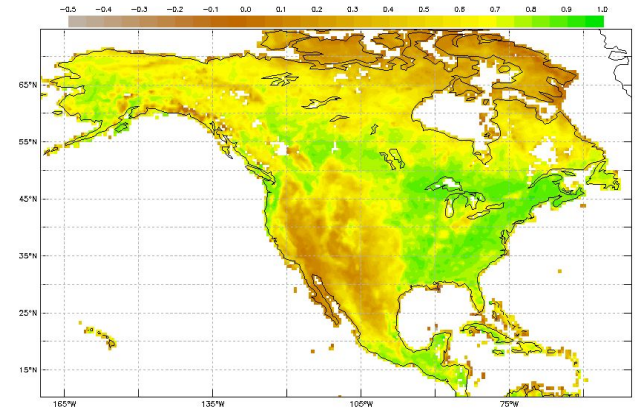
January 2019 - Monthly Normalized Difference Vegetation Index (dimensionless)



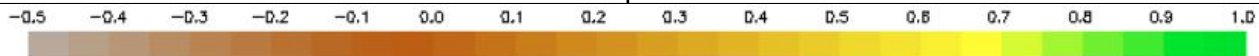
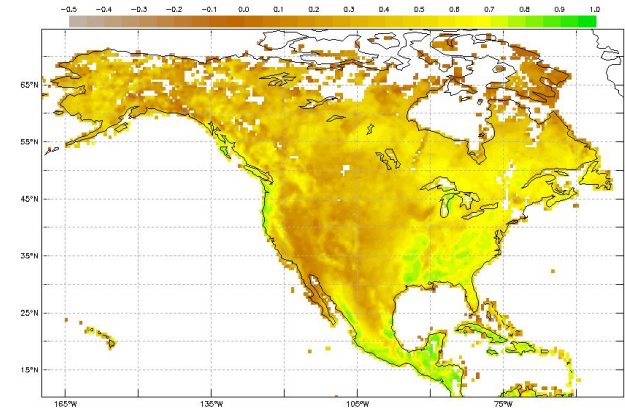
April 2019 - Monthly Normalized Difference Vegetation Index (dimensionless)



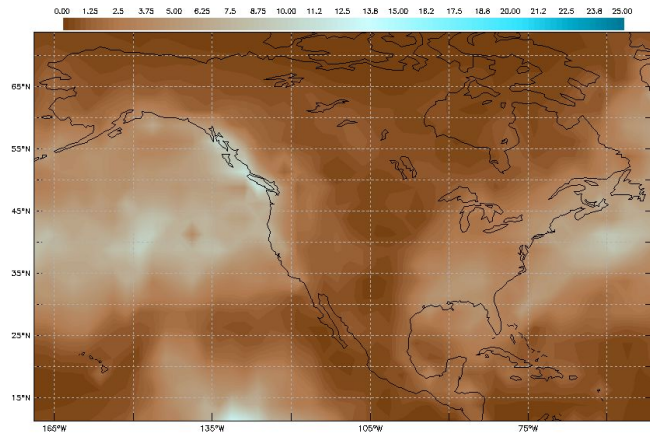
July 2019 - Monthly Normalized Difference Vegetation Index (dimensionless)



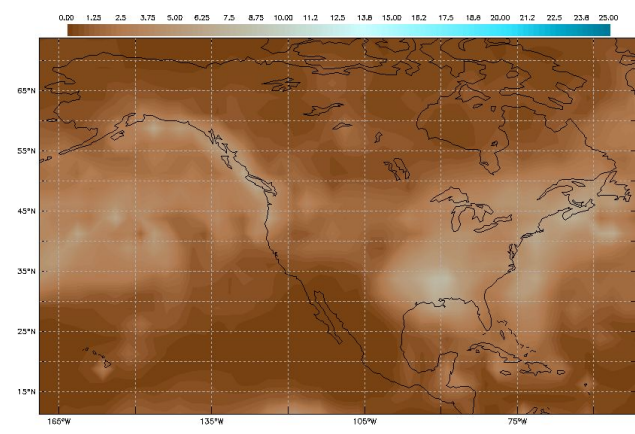
October 2019 - Monthly Normalized Difference Vegetation Index (dimensionless)



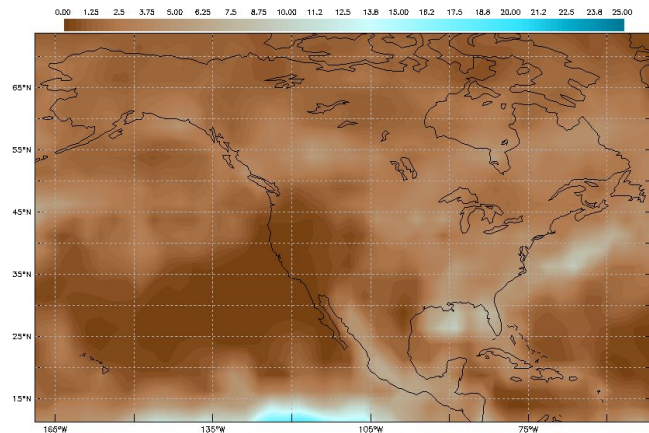
Monthly Average Precipitation Rate (millimeters per day)



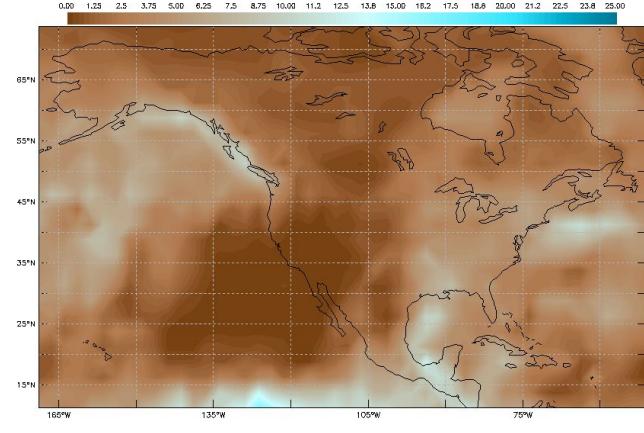
Monthly Average Precipitation Rate (millimeters per day)



Monthly Average Precipitation Rate (millimeters per day)



Monthly Average Precipitation Rate (millimeters per day)



0.00 1.25 2.5 3.75 5.00 6.25 7.5 8.75 10.00 11.2 12.5 13.8 15.00 16.2 17.5 18.8 20.00 21.2 22.5 23.8 25.00