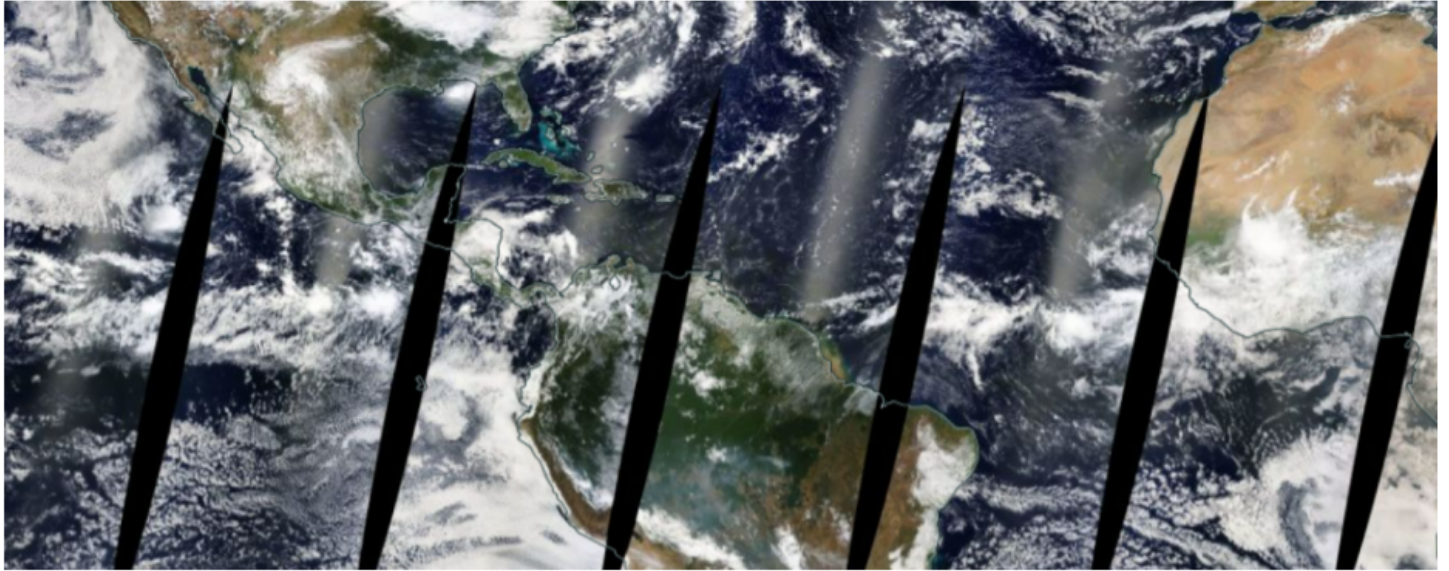

My NASA Data - Lesson Plans

Accessing Worldview Data



Overview

Worldview is a valuable resource in understanding information about the atmosphere. Learn how to access models in order to answer your own questions.

Learning Objectives

Ability to use Worldview to obtain and use models of the atmosphere.

Essential Questions

How are models accessed from Worldview?

Technology Requirements

- Internet Required
- One-to-One (tablet, laptop, or CPU)
- One-to-a-Group
- Teacher computer/projector only

Teacher Background Information

The article [How NASA is Helping the World Breathe More Easily](#) is good background information.

Procedure

Satellite data is a tremendous resource for learning about the atmosphere and air quality of planet Earth. Worldview is a website that combines the data of many sources, allowing users to select which data to use. The website is a little challenging to use, but there are some tools to support beginners. Go through the tools and then try out the website for yourself. This lesson will prepare students for further investigations.

[Video: NASA's Worldview - Two Decades of Earth Data at Your Fingertips](#)

Video

NASA's Worldview - Two Decades of Earth Data at Your Fingertips | <https://www.youtube.com/watch?v=X16cfGPL2wA> | Source: NASA's Goddard Space Flight Center/Lauren Ward

1. Watch the video [NASA's Worldview - Two Decades of Earth Data at Your Fingertips](#) to learn what Worldview can do.
2. Learn more about [Getting Started with NASA Worldview](#) with the video tutorial.

[Video: Getting Started with NASA Worldview](#)

Video

Getting Started with NASA Worldview | https://www.youtube.com/watch?v=nW8JZJ-5g_0 | Source: NASA Earthdata

1. [Getting Started with NASA Worldview](https://www.youtube.com/watch?v=nW8JZJ-5g_0&t=2) (https://www.youtube.com/watch?v=nW8JZJ-5g_0&t=2)
2. A set of [Worldview written instructions](#) is also available.
3. Sample some of the data available with these data sets, already prepared:
 - [Explore Our Magnificent Earth with NASA Worldview | Earthdata](#)
4. Ready to explore on your own? Have students explore and select some data to view.
 - Go to [NASA Worldview](#) and select data to investigate.
 - What questions do you have?

Sources:

1. *Explore Our Magnificent Earth with NASA Worldview*. (2021, March 1). Earthdata. Retrieved August 24, 2022, from <https://www.earthdata.nasa.gov/worldview/earth-day-satellite-views>
2. *Getting Started with NASA Worldview*. (n.d.). YouTube. Retrieved August 24, 2022, from https://www.youtube.com/watch?v=nW8JZJ-5g_0&t=2s
3. *Home*. (n.d.). YouTube. Retrieved August 24, 2022, from <https://worldview.earthdata.nasa.gov/?v=-209.76372474976517,-60.4789228...>
4. *How NASA is Helping the World Breathe More Easily*. (2020, April 14). NASA. Retrieved August 24, 2022, from <https://www.nasa.gov/feature/goddard/2020/how-nasa-is-helping-the-world...>
5. *NASA's Worldview - Two Decades of Earth Data at Your Fingertips*. (2018, June 5). YouTube. Retrieved August 24, 2022, from <https://www.youtube.com/watch?v=X16cfGPL2wA>

Extensions

After learning how to use Worldview, pose questions for students to investigate or have them pose their own questions.