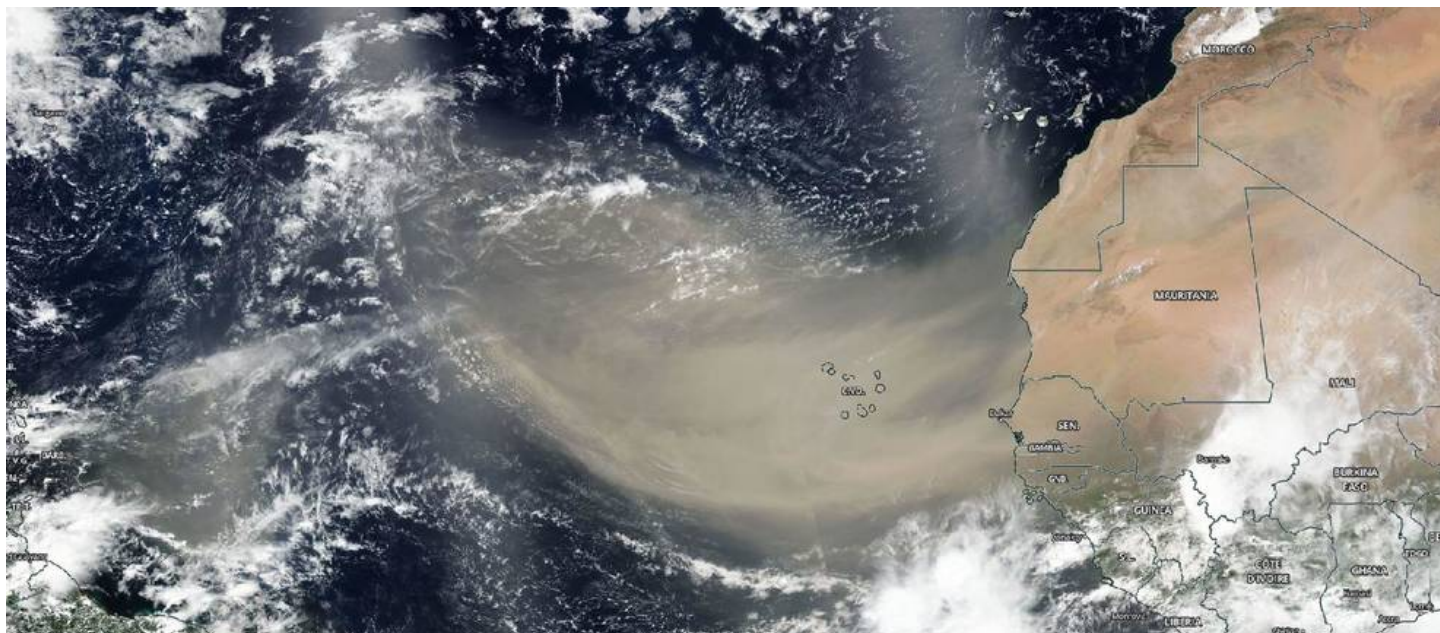

My NASA Data - Interactive Models

Pollutant Source and Transport



Teachers who are interested in receiving the answer key, please complete the [Teacher Key Request and Verification Form](#). We verify that requestors are teachers prior to sending access to the answer keys as we've had many students try to pass as teachers to gain access.

Grade Band

- 6-8
- 9-12

Supported NGSS Performance Expectations

- [MS-ESS3-3: Apply scientific principles to design a method for monitoring and minimizing a human impact on the environment.](#)
- [MS-ESS3-4: Construct an argument supported by evidence for how increases in human population and per-capita consumption of natural resources impact Earth's systems.](#)
- [HS-ESS3-4: Evaluate or refine a technological solution that reduces impacts of human activities on natural systems.](#)

-
- [HS-ESS2-2: Analyze geoscience data to make the claim that one change to Earth's surface can create feedbacks that cause changes to other Earth systems.](#)

NGSS Disciplinary Core Ideas

- ESS2A: Earth Materials and Systems
- ESS3C: Human Impacts on Earth Systems

Science and Engineering Practices

- Developing and Using Models
- Analyzing and Interpreting Data

Crosscutting Concepts

- Stability and Change

Related Resources

- [Pollutant Source and Transport Interactive Model](#)