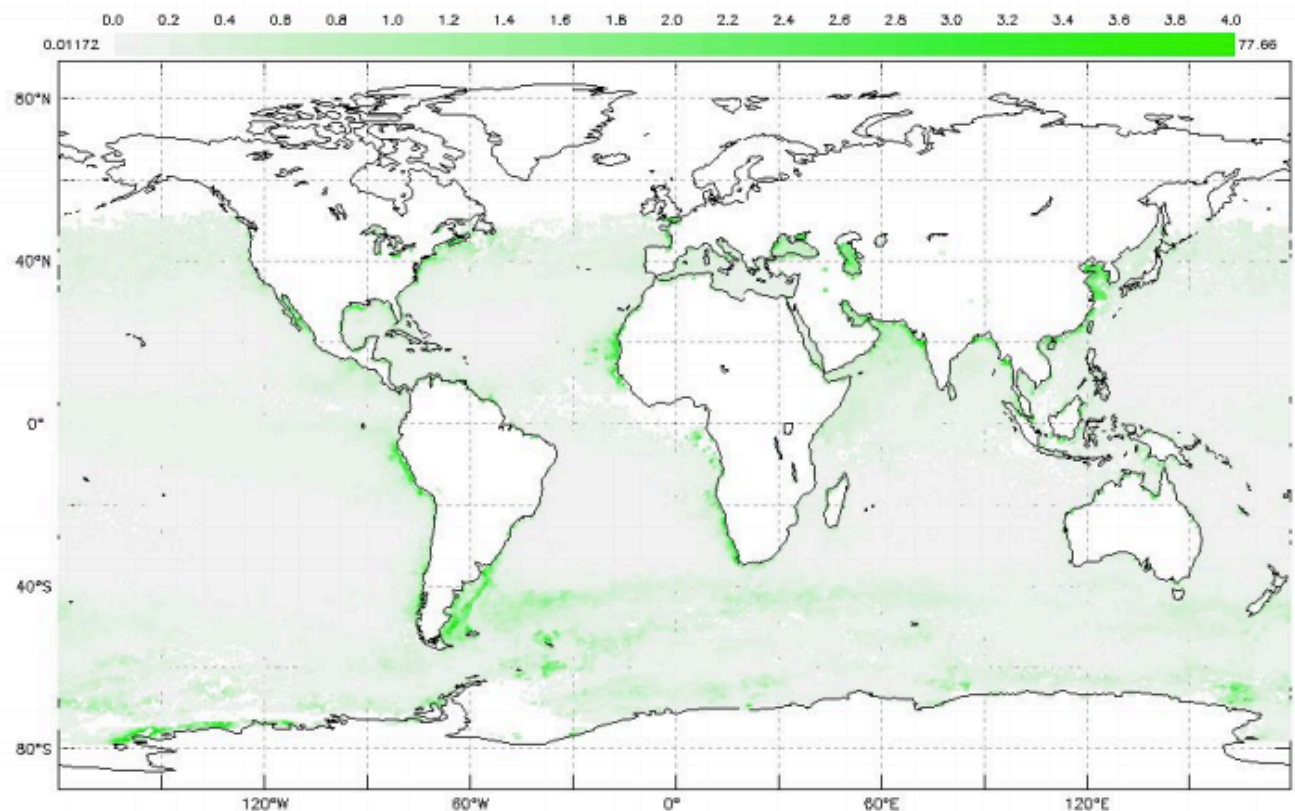


Earth System Data Explorer Images - Global Phytoplankton Distribution



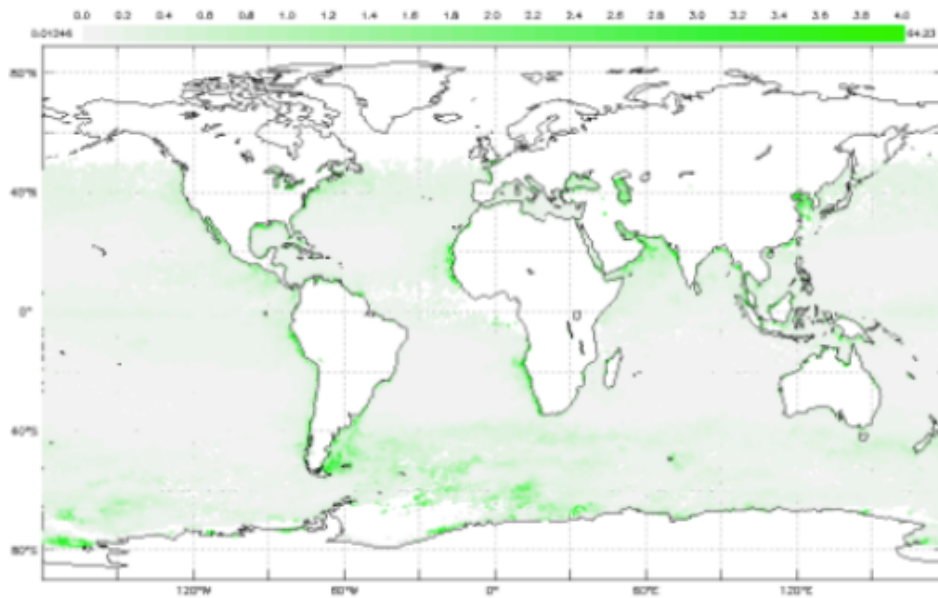
Data Set: Vegetation **Variable:** Chlorophyll Concentration (milligrams per cubic meter) **Date:** January 2018
Phenomenon: Global Phytoplankton Distribution



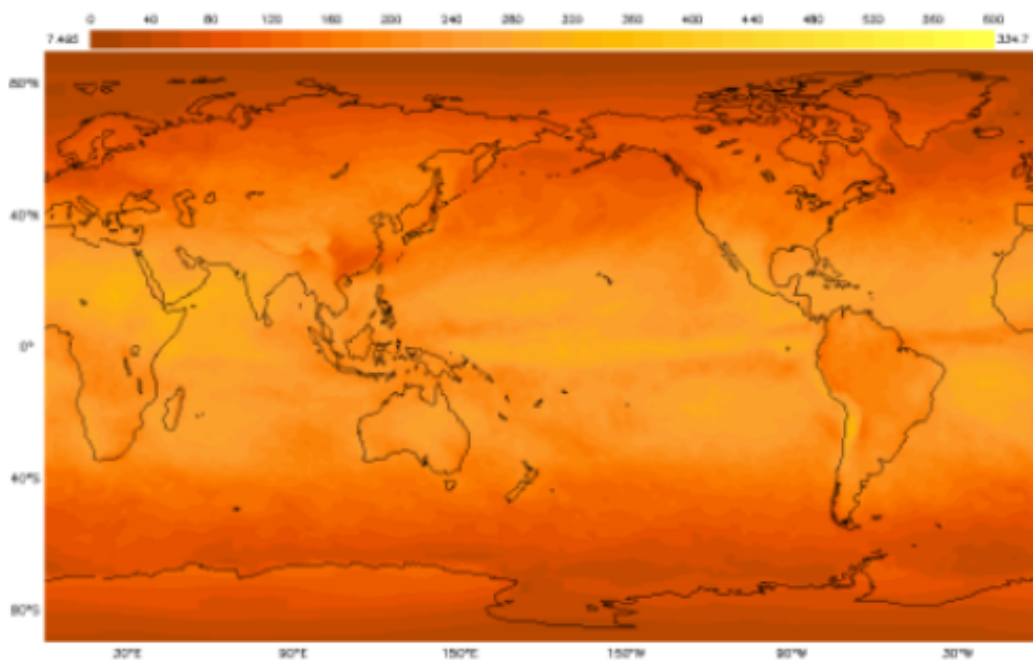
Teachers, are you looking for resources to help you engage students in data analysis related to Global Phytoplankton Distribution?

Check out this monthly [2018 Images](#) featuring two science variables related to Phytoplankton Distribution:

- *Chlorophyll Concentration (milligrams per cubic meter)* - This quantity describes the concentration of chlorophyll in oceans. Chlorophyll is a pigment that plants use to absorb sunlight, key to the process of photosynthesis. The higher the concentration, the greater amount of plant life in the oceans.



- *Monthly Flow of Energy into Surface by Shortwave Radiation (watts per square meter)* - This quantity describes the total flow of energy from the Atmosphere to the surface by shortwave radiation, which is the visible light coming from the Sun. This is the flow of energy that warms the Earth's surface during the daytime. Clouds affect the rate of this energy flow, and the rate also varies with the seasons (higher rate in summer and lower rate in winter).



Document Resources

- [2018 Global Phytoplankton Distribution Images](#)