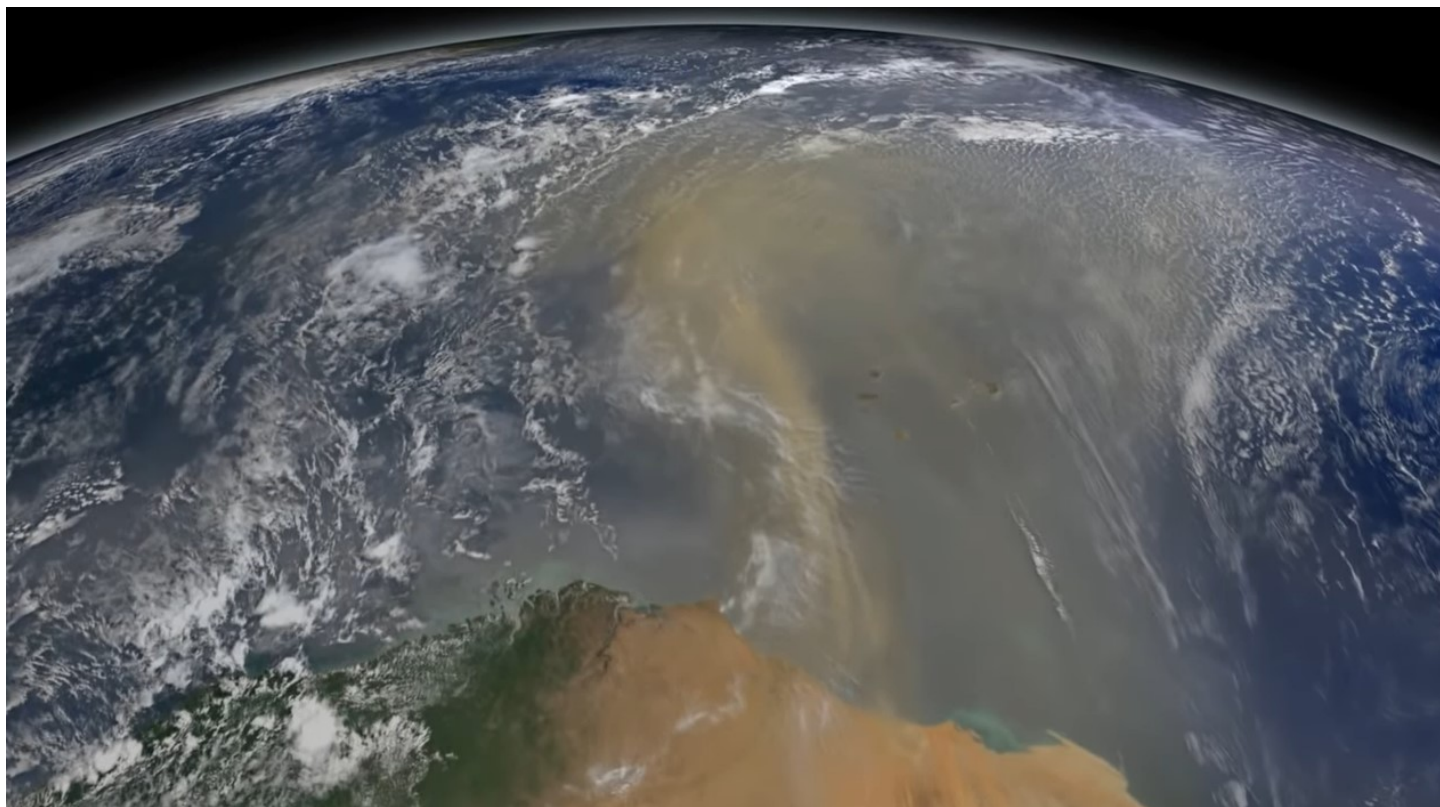

My NASA Data - Mini Lesson/Activity

Energy and Matter: Dust Transport



Student Directions

Review the video, [Satellite Tracks Saharan Dust to Amazon in 3-D](#), and answer the following questions.

Source: NASA Goddard. Video Length: 2:13 | <https://www.youtube.com/watch?v=ygulQJole2Y>

Steps:

1. Check with your instructor on how to submit your answers.
2. Where does the dust originate or come from? Explain what is important about the location of where the dust originates.
3. What location does the dust travel to? Explain what is important about this location.
4. How does the dust travel from one place to the other?
5. What NASA satellite collects the data?
6. Explain how the geosphere and the biosphere are connected in this example.

Teachers, these mini lessons/student activities are perfect "warm up" tasks that can be used as a

hook, bell ringer, exit slip, etc. They take less than a class period to complete. Learn more on the "[My NASA Data What are Mini Lessons?](#)" page.

Teachers who are interested in receiving the answer key, please complete the [Teacher Key Request and Verification Form](#). We verify that requestors are teachers prior to sending access to the answer keys as we've had many students try to pass as teachers to gain access.

Access and Explore Data

- [Monthly Aerosol Optical Depth \(CALIPSO\) \(dimensionless\)](#)
- [Monthly Aerosol Optical Depth \(MISR\) \(dimensionless\)](#)